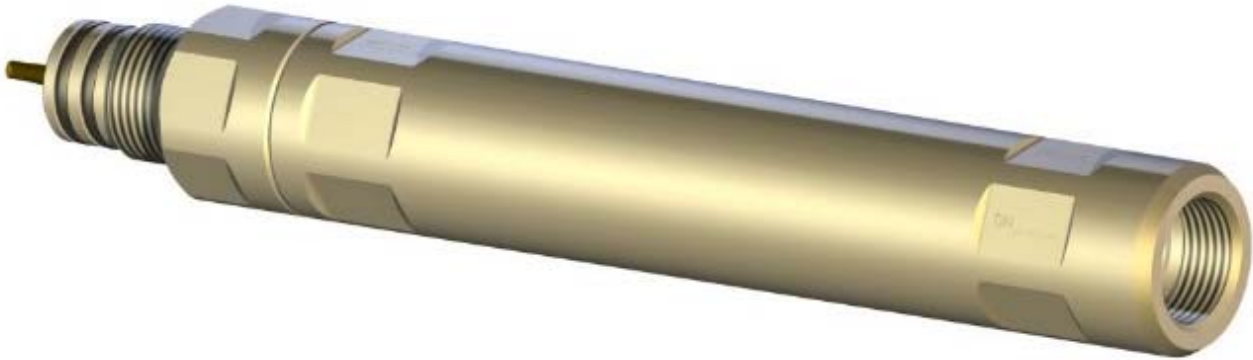


# Electric Line Swivel Joint

## Free Rotation & Torque Minimization

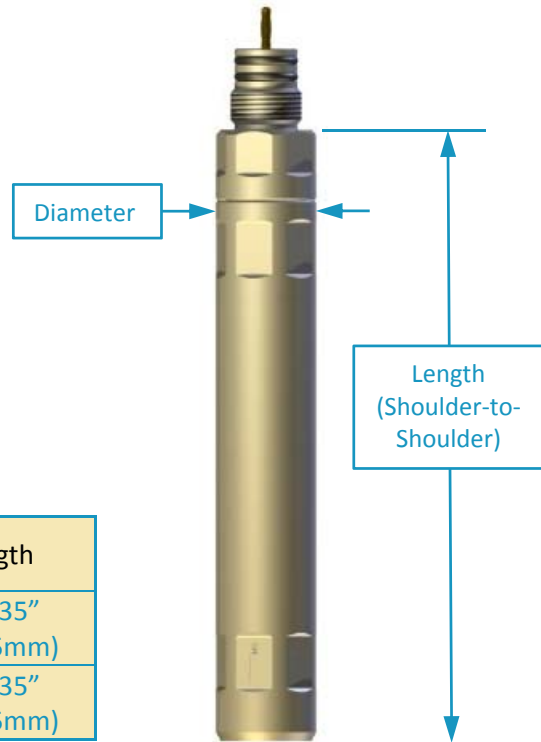


**Q: Are you concerned about the possibility of the tool string twisting and causing potential damage to the e-line during downhole operations?**

**A: Our Swivel Joint solves this issue by using a cylindrical roller bearing incorporated into its design which is used to allow free rotation of the bottom and top portions of the Swivel Joint.**

### Features and Benefits

- Prevents the build-up of torque in the tool string reducing the chances of damage caused to the electric line or wireline strand.
- Allows 360° rotation of the lower part of the tool string while maintaining electrical integrity.
- Swivel can be used as a rotating point when handling long or cumbersome tools to aid make-up or break-out.
- The Swivel can be positioned at any point along the length of the electric line tool string to suit operational requirements.



Nominal Size	Diameter	Connections	Length
1-11/16"	1.688" (42.9mm)	1-3/16" – 12 UN Pin x 1-3/16" – 12 UN box	10.335" (262.5mm)
2-1/8"	2.125" (54.0mm)	1-3/16" – 12 UN Pin x 1-3/16" – 12 UN box	10.335" (262.5mm)

*We worry about the downhole environment so you don't have to. Contact us to discuss current Swivel Joint configurations that will fit your electric line application, or let us customize a solution for you.*

