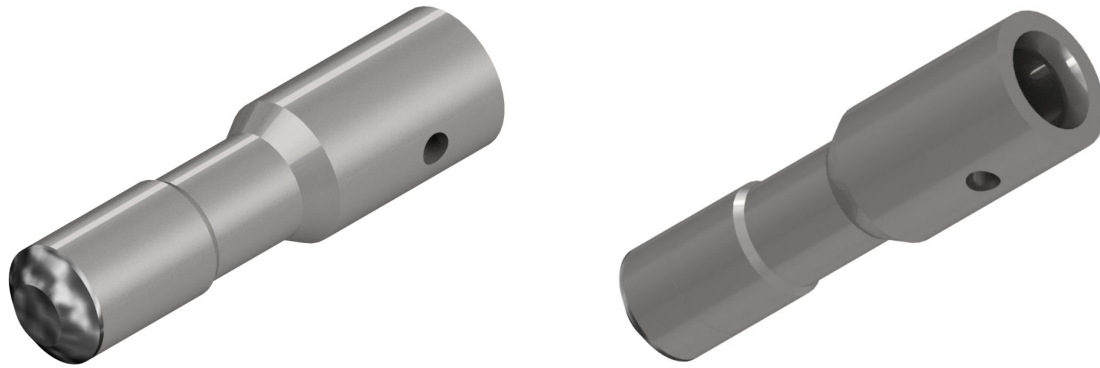


Extreme-Life Diamond Tipped Servo Poppet

For MWD Pulsers



Q: Do your customers count on consistent and reliable performance from the pulsers in your Measurement While Drilling (MWD) assembly?

A: Stag's extreme-life Servo Poppet is built for ruggedness and longevity due to the durability of the diamond tip at the contact surface.

Measurement While Drilling (MWD) equipment often employs the use of positive pulse telemetry for communicating real-time data during the process of drilling a well. The Servo Poppet and orifice are integral components in the pulser which are used to drive the main valve to encode signals into the drilling fluid column. The Servo Poppet and orifice are essentially the heartbeat of the pulser system.

Features and Benefits

- Diamond tip significantly reduces wear on the Servo Poppet contact surface.
- Servo Poppet survives *extreme* cycle counts over its lifetime thereby reducing rework or replacement costs.
- Servo Poppet tips can be customized to fit pulsers designed by different manufacturers.



We worry about the downhole environment so you don't have to. Contact us to discuss Servo Poppet styles that will fit your downhole application, or let us customize a solution for you.